



JINHUA JECH TOOLS CO.,LTD

No. 1448 Tongxi Road, Linjiang Industrial Park, Wucheng District,

Jinhua City, Zhejiang, P. R. China

00-86-579-8221 0589/8221 2186

00-86-579-8221 2585

E-mail: jech@jechsafety.com jech01@jechsafety.com

http://www.jechsafety.com https://jechsafety.en.alibaba.com



TOOL LANYARDS





Jinhua JECH Tools Co., Ltd. is a manufacturer specializing in the production of high-building safety harness, safety belts, energy absorber lanyard belts, fall arrester and lifelines, climbing supplies and other personal protection equipment.

It is 11-years from the establishment of JECH Tools in 2010, has developed into a new building of more than 10,000 square meters with more than 120 employees. JECH Tools is the factory that has a modern production system integrating scientific research, production and sales.

The company has adhered to the "integrity, safety, science, and rapid" business principles, with the most advanced imported textile machinery, dyeing equipment, computer pattern sewing machines and various advanced processes for standardized production. By subdividing product portfolios, perfecting production processes and multi-layer quality inspection to strict control the each process. In order to provide more professional services and more stable quality, the company has set up JECH'S testing laboratory to test the products up to 100 critical inspections that meets international standards such as (European standard) CE, (American standard) ANSI, (Canadian standard) CSA, (Australian standard) AS, (Singapore standard) PSB and ISO9001:2015.

The third-party European inspection company conducts regular training, review and evaluation of the **JECH laboratory each year, and issues the CE certification to laboratory and quality-management system under international standards.**

Advanced production equipment, reasonable production process and perfect quality inspection laboratory have greatly improved production efficiency and product quality. At present, it has achieved production targets of 3,000 pieces in daily output, and annual output exceeding 1 million pieces. The products of JECH brand, its quality and service have won unanimous praise from customers.

JECH products has passed the **EU CE/EN361, EN362, EN354, EN355, EN353-2, EN358, EN813, EN1497, EN12277, US ANSI: Z359.12, Z359.13, Z359.14, Z359.15**, Canada CSA, Singapore PSB and other more than 40 international authorities, the products are exported to Europe, the United States, Canada, Japan, Brazil, South America and the Middle East and Southeast Asia countries, the year Sales achieved rapid and steady growth.



The quality is the life of an enterprise, and innovation is the future of the enterprise. The company has established an independent research and development team, specializing in technical support and research and development of new products. In 2016, it was recognized as "Jinhua High-tech Enterprise" by Jinhua Municipal Government. In the same year, it was awarded the title of "Science and Technology SMES of Zhejiang Province" by Zhejiang Science and Technology Department. At the end of 2018, there were 21 new utility patents, and in 2019, they continued to apply for up to 11 new invention and utility model patents. The company has strengthened cooperation with domestic professional universities to develop new products since 2017.

JECH will continue to go forward and forge ahead to open up new world, and adhering to the innovation and development, to create a win-win situation for all-round services to serve the customer.





◀ **N89002 (TOOL BAG)**
N83077(TOOL TETHER)



◀ **N86003(ANCHOR ATTACHMENT)**
N83067(TOOL TETHER)



▲ **N89001 (TOOL ATTACHMENT)**
N87030 (COILED LANYARD)



◀ **N89001**

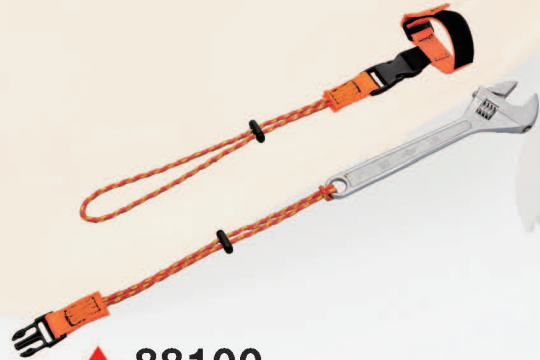
2 TOOL LANYARDS

▲ N81028 (TOOL TETHER)
N86001 (ANCHOR ATTACHMENT)



▲ N81031
TOOL TETHER

▲ N87030
COILED LANYARD



▲ 88100
TOOL ATTACHMENTS
Material:Polyester
Width:25mm
Strength:1kg(2.2lbs)
Length:35CM(13.8")

▲ N83030
TOOL TETHER



Anchored Heavy Tool Lanyards. Protect your tools and your workers. Our wide selection of Tool Lanyards offer a protective lanyard system for tools from 2.5 pounds up to 25 pounds. They provide a supple, low-profile coil system that minimizes the possibility of entanglement, allows full-arms reach and tool use without any adverse retraction force. The coil is enclosed in tough nylon webbing to provide strength and added safety. They're ideal for working at heights with heavy tools, preventing tool damage or personal injury. The JECH[®] Heavy Tool Lanyards are available in Personal Attachment models and Bucket Attachment models. Non-Conductive models provide a method for easily exchanging one tool for another on the lanyard. The JECH[®] Heavy Tool Lanyards are approved to SGSANSI/ISEA 121-2018 testing.



N81016
 Material: Polyester
 Color: Orange(Customizable)
 With Aluminium Hook
 Stretched tubular Webbing Width: 15mm
 Retracted length: from 900--1400mm
 Rope Diameter: \varnothing 4mm
 Length: 150mm(Customizable)
 Tool Max Capacity: 10LBS
 Conform to ANSI/ISEA 121:2018



N81027
 Material: Polyester
 Color: Orange(Customizable)
 With Aluminium Hook
 Stretched tubular Webbing Width: 15mm
 Retracted length: from 900--1400mm
 Rope Diameter: \varnothing 4mm
 Length: 150mm(Customizable)
 Tool Max Capacity: 5LBS
 Conform to ANSI/ISEA 121:2018



N81028
 Material: Polyester
 Color: Orange(Customizable)
 With stainless Hook
 Stretched tubular Webbing Width: 15mm
 Retracted length: from 900--1400mm
 Rope Diameter: \varnothing 4mm
 Length: 150mm(Customizable)
 Tool Max Capacity: 10LBS
 Conform to ANSI/ISEA 121:2018



N81029
 Material: Polyester
 Color: Orange(Customizable)
 With Aluminium Hook
 Stretched tubular Webbing Width: 15mm
 Retracted length: from 900--1400mm
 Rope Diameter: \varnothing 4mm
 Length: 150mm(Customizable)
 Tool Max Capacity: 5LBS
 Conform to ANSI/ISEA 121:2018



N81030
 Material: Polyester
 Color: Orange(Customizable)
 With Aluminium Hook
 Stretched tubular Webbing Width: 15mm
 Retracted length: from 900--1400mm
 Rope Diameter: \varnothing 4mm
 Length: 150mm(Customizable)
 Tool Max Capacity: 10LBS
 Conform to ANSI/ISEA 121:2018



N81031
 Material: Nylon
 Color: Green(Customizable)
 With Aluminium Hook
 Stretched tubular Webbing Width: 20mm
 Retracted length: from 900--1300mm
 Stretched Rope Diameter: \varnothing 4mm
 Length: 150mm(Customizable)
 Tool Max Capacity: 20LBS
 Conform to ANSI/ISEA 121:2018



N81032
 Material: Nylon
 Color: Green(Customizable)
 With 304 Stainless steel Hook
 Stretched tubular Webbing Width: 20mm
 Retracted length: from 900--1300mm
 Stretched Rope Diameter: \varnothing 4mm
 Length: 150mm(Customizable)
 Tool Max Capacity: 20LBS
 Conform to ANSI/ISEA 121:2018



N81033
 Material: Nylon
 Color: Green(Customizable)
 With twist Aluminium Hook
 Stretched tubular Webbing Width: 20mm
 Retracted length: from 900--1300mm
 Stretched Rope Diameter: \varnothing 4mm
 Length: 150mm(Customizable)
 Tool Max Capacity: 20LBS
 Conform to ANSI/ISEA 121:2018



N81035
 Material: Nylon
 Color: Green(Customizable)
 With Aluminium Hook
 Stretched tubular Webbing Width: 20mm
 Retracted length: from 900--1300mm
 Stretched Rope Diameter: \varnothing 4mm
 Length: 150mm(Customizable)
 Tool Max Capacity: 10LBS
 Conform to ANSI/ISEA 121:2018



N82067
 Material: Polyester
 Color: Orange(Customizable)
 With Aluminium Hook
 Stretched tubular Webbing Width: 15mm
 Retracted length: from 900--1200mm
 Tool Max Capacity: 15LBS
 Conform to ANSI/ISEA 121:2018



N82068
 Material: Polyester
 Color: Orange(Customizable)
 With one 304 Stainless Steel Hook
 Stretched tubular Webbing Width: 15mm
 Retracted length: from 900--1200mm
 Tool Max Capacity: 15LBS
 Conform to ANSI/ISEA 121:2018



N82069
 Material: Polyester
 Color: Orange(Customizable)
 With Twist Aluminium Hook
 Stretched tubular Webbing Width: 15mm
 Retracted length: from 900--1200mm
 Tool Max Capacity: 15LBS
 Conform to ANSI/ISEA 121:2018



N81034
 Material: Polyester
 Color: Black(Customizable)
 With Aluminium Hook
 Stretched tubular Webbing Width: 20mm
 Retracted length: from 900--1400mm
 Rope Diameter: \varnothing 4.9mm
 Length: 150mm(Customizable)
 Tool Max Capacity: 5LBS
 Conform to ANSI/ISEA 121:2018

N82070
 Material: Polyester
 Color: Green(Customizable)
 With twist Aluminium Hook
 Stretched tubular Webbing Width: 25mm
 Retracted length: from 900--1400mm
 Tool Max Capacity: 25LBS
 Conform to ANSI/ISEA 121:2018



N83030
 Material: Polyester
 Color: Orange(Customizable)
 With double stainless steel Hooks
 Stretched tubular Webbing Width: 20mm
 Retracted length: from 900--1400mm
 Tool Max Capacity: 15LBS
 Conform to ANSI/ISEA 121:2018



◀ N83066

Material: Polyester
Color: Green(Customizable)
With double twist Aluminium Hook
Stretched tubular Webbing Width: 20mm
Retracted length: from 900--1400mm
Tool Max Capacity: 20LBS
Conform to ANSI/ISEA 121:2018



◀ N83067

Material: Polyester
Color: Green(Customizable)
With double Aluminium Hooks
Stretched tubular Webbing Width: 20mm
Retracted length: from 900--1400mm
Tool Max Capacity: 20LBS
Conform to ANSI/ISEA 121:2018



◀ N83070

Material: Polyester
Color: Green(Customizable)
With double Aluminium Hook
Stretched tubular Webbing Width: 25mm
Retracted length: from 900--1400mm
Tool Max Capacity: 25LBS
Conform to ANSI/ISEA 121:2018



◀ N83071

Material: Nylon
Color: Green(Customizable)
With double twist Aluminium Hook
Stretched tubular Webbing Width: 20mm
Retracted length: from 900--1300mm
Tool Max Capacity: 20LBS
Conform to ANSI/ISEA 121:2018





◀ N83077
 Material: Polyester
 Color: Orange(Customizable)
 With two twist Aluminium Hook
 Stretched tubular Webbing Width: 15mm
 Retracted length: from 900--1300mm
 Tool Max Capacity: 15LBS
 Conform to ANSI/ISEA 121:2018



◀ N83078
 Material: Polyester
 Color: Orange(Customizable)
 With two Aluminium Hook
 Stretched tubular Webbing Width: 15mm
 Retracted length: from 900--1400mm
 Tool Max Capacity: 5LBS
 Conform to ANSI/ISEA 121:2018



◀ N83079
 Material: Polyester
 Color: Orange(Customizable)
 With double 304 Stainless Steel Hooks
 Stretched tubular Webbing Width: 15mm
 Retracted length: from 900--1300mm
 Tool Max Capacity: 15LBS
 Conform to ANSI/ISEA 121:2018



◀ N83080
 Material: Nylon
 Color: Green(Customizable)
 With double Aluminium Hook
 Stretched tubular Webbing Width: 20mm
 Retracted length: from 900--1300mm
 Tool Max Capacity: 10LBS
 Conform to ANSI/ISEA 121:2018



◀ N83081
 Material: Polyester
 Color: Green(Customizable)
 With double Twist Aluminium Hook
 Stretched tubular Webbing Width: 20mm
 Retracted length: from 900--1400mm
 Tool Max Capacity: 15LBS
 Conform to ANSI/ISEA 121:2018



◀ N83082
 Material: Nylon
 Color: Green(Customizable)
 With double Aluminium Hook
 Stretched tubular Webbing Width: 20mm
 Retracted length: from 900--1300mm
 Tool Max Capacity: 20LBS
 Conform to ANSI/ISEA 121:2018



◀ N83083
 Material: Nylon
 Color: Green(Customizable)
 With double stainless steel Hooks
 Stretched tubular Webbing Width: 20mm
 Retracted length: from 900--1300mm
 Tool Max Capacity: 20LBS
 Conform to ANSI/ISEA 121:2018



◀ N83084
 Material: Polyester
 Color: Green(Customizable)
 With double Aluminium Hooks
 Stretched tubular Webbing Width: 20mm
 Retracted length: from 900--1400mm
 Tool Max Capacity: 15LBS
 Conform to ANSI/ISEA 121:2018



◀ **N83085**
 Material: Polyester
 Color: Green(Customizable)
 With double twist Aluminium Hook
 Stretched tubular Webbing Width: 25mm
 Retracted length: from 900--1400mm
 Tool Max Capacity: 20LBS
 Conform to ANSI/ISEA 121:2018



◀ **N83089**
 Material: Polyester
 Color: Green(Customizable)
 With double 304 stainless steel Hooks
 Stretched tubular Webbing Width: 20mm
 Retracted length: from 900--1400mm
 Tool Max Capacity: 20LBS
 Conform to ANSI/ISEA 121:2018



◀ **N83086**
 Material: Polyester
 Color: Orange (Customizable)
 With double Aluminium Hook
 Stretched tubular Webbing Width: 15mm
 Retracted length: from 900--1300mm
 Tool Max Capacity: 15LBS
 Conform to ANSI/ISEA 121:2018



◀ **N83090**
 Material: Polyester
 Color: Green(Customizable)
 With double 304 Stainless Steel Hook
 Stretched tubular Webbing Width: 20mm
 Retracted length: from 900--1400mm
 Tool Max Capacity: 15LBS
 Conform to ANSI/ISEA 121:2018



◀ **N83087**
 Material: Polyester
 Color: Green(Customizable)
 With double Aluminium Hook
 Stretched tubular Webbing Width: 25mm
 Retracted length: from 900--1400mm
 Tool Max Capacity: 25LBS
 Conform to ANSI/ISEA 121:2018



◀ **N84072**
 Material: Nylon
 Color: Green(Customizable)
 With three Aluminium Hook
 Stretched tubular Webbing Width: 20mm
 Retracted length: from 900mm--1300mm
 Tool Max Capacity: 20LBS
 Conform to ANSI/ISEA 121:2018



◀ **N83088**
 Material: Polyester
 Color: Green(Customizable)
 With double twist Aluminium Hooks
 Stretched tubular Webbing Width: 25mm
 Retracted length: from 900--1400mm
 Tool Max Capacity: 25LBS
 Conform to ANSI/ISEA 121:2018



◀ **N84074**
 Material: Polyester
 Color: Orange(Customizable)
 With three twist Aluminium Hook
 Stretched tubular Webbing Width: 15mm
 Retracted length: from 900--1300mm
 Tool Max Capacity: 15LBS
 Conform to ANSI/ISEA 121:2018



◀ **N84076**
 Material: Polyester
 Color: Orange(Customizable)
 With three Aluminium Hooks
 Stretched tubular Webbing Width: 15mm
 Retracted length: from 900--1400mm
 Tool Max Capacity: 5LBS
 Conform to ANSI/ISEA 121:2018



◀ **N84077**
 Material: Nylon
 Color: Green(Customizable)
 With three twist Aluminium Hook
 Stretched tubular Webbing Width: 20mm
 Retracted length: from 900--1300mm
 Tool Max Capacity: 20LBS
 Conform to ANSI/ISEA 121:2018



◀ **N84078**
 Material: Nylon
 Color: Green Customizable)
 With double 304 Stainless steel Hook
 Stretched tubular Webbing Width:20mm
 Retracted length: from 900--1300mm
 Tool Max Capacity: 20LBS
 Conform to ANSI/ISEA 121:2018



N85069 ▶

Material: Polyester
 Color: Orange(Customizable)
 With twist Aluminium Hook
 Stretched tubular Webbing Width: 15mm
 Retracted length: from 900--1400mm
 Rope Diameter: \varnothing 4mm
 Length: 150mm(Customizable)
 Tool Max Capacity: 5LBS
 Conform to ANSI/ISEA 121:2018



▶ **N85067**

Material: Nylon
 Color:Green(Customizable)
 With Aluminium Hook
 Stretched tubular Webbing Width: 20mm
 Retracted length: from 900--1300mm
 Stretched Rope Diameter: \varnothing 4mm
 Length: 150mm(Customizable)
 Tool Max Capacity: 5LBS
 Conform to ANSI/ISEA 121:2018

▶ **N85068**

Material: Nylon
 Color: Green(Customizable)
 With Aluminium Hook
 Stretched tubular Webbing Width: 20mm
 Retracted length: from 900--1300mm
 Stretched Rope Diameter: \varnothing 4mm
 Length: 150mm(Customizable)
 Tool Max Capacity: 10LBS
 Conform to ANSI/ISEA 121:2018



01



02



03



04



05

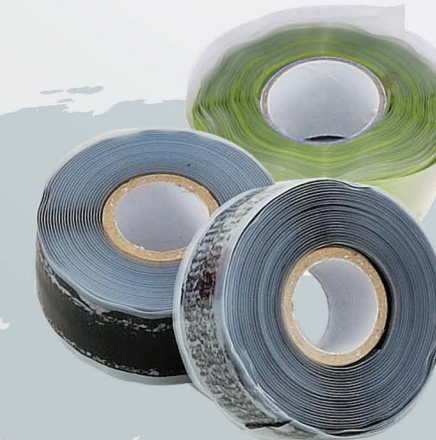


06



◀ **89011**

Silicone Tool Tape
 Wide: 25mm
 Length: 3m, 5m, 10m
 Color: Red, Green, Black, Orange
 Conform to ANSI/ISEA 121:2018



◀ **89012**

High Quality Silicone Tool Tape
 (with fibre)
 Wide: 25mm
 Length: 3m, 5m, 10m
 Color: Red, Green, Black, Orange
 Conform to ANSI/ISEA 121:2018

◀ **N86009**

ANCHOR ATTACHMENT
 Material: Nylon
 Color: Green(Customizable)
 With one Zinc Alloy Buckle
 Webbing Width: 20mm
 Stretched Rope Diameter: \varnothing 4mm, Length:150mm
 Full retracted Length from 300mm to 450mm (Customizable)
 Tool Max Capacity: 5LBS
 Connected the tool lanyard length should be less than 120cm
 Conform to ANSI/ISEA 121:2018



◀ **N81031**

TOOL LANYARD (20LBS)





◀ N86001

Material: Polyester
 Color: Yellow(Customizable)
 D-ring made of 304 stainless steel
 Webbing Width: 25mm
 Length: 100/150/200mm(Customizable)
 Tool Max Capacity: 10LBS
 Connected the tool lanyard length should be less than 1200mm
 Conform to ANSI/ISEA 121:2018



◀ 86083

Material: Polyester
 Color: Orange(Customizable)
 With 304 Stainless steel D-ring
 Webbing Width: 20mm
 Rope Diameter: \varnothing 4mm
 Length: 150mm(Customizable)
 Tool Max Capacity: 2LBS
 Connected the tool lanyard length should be less than 1200mm
 Conform to ANSI/ISEA 121:2018



◀ N86002

Material: Polyester
 Color: Black(Customizable)
 D-ring made of 304 stainless steel
 Webbing Width: 15mm
 Length: 100/150/200/250mm(Customizable)
 Tool Max Capacity: 2LBS
 Connected the tool lanyard length should be less than 1200mm
 Conform to ANSI/ISEA 121:2018



◀ N86005

Material: Nylon
 Color: Green(Customizable)
 Webbing Width: 20mm
 Rope Diameter: \varnothing 4mm, Length: 150mm(Customizable)
 With one 304 Stainless Steel Buckle
 Full retracted Length from 300mm to 450mm (Customizable)
 Tool Max Capacity: 5LBS
 Connected the tool lanyard length should be less than 1200mm
 Conform to ANSI/ISEA 121:2018



◀ N86003

Material: Polyester
 Color: Black(Customizable)
 Webbing Width: 15mm
 Length: 300mm(customizable)
 With one 304 stainless D-ring
 Tool Max Capacity: 10LBS
 Connected the tool lanyard length should be less than 1200mm
 Conform to ANSI/ISEA 121:2018



◀ N86006

Material: Nylon
 Color: Green(Customizable)
 With one Zinc Alloy Buckle
 Webbing Width: 20mm
 Stretched Rope Diameter: \varnothing 4mm ,Length: 150mm
 Full retracted Length from 300mm to 450mm (Customizable)
 Tool Max Capacity: 2LBS
 Connected the tool lanyard length should be less than 1200mm
 Conform to ANSI/ISEA 121:2018



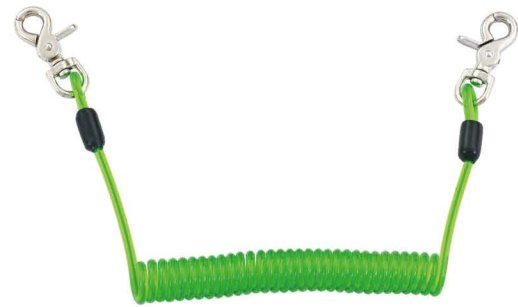
◀ N86004

Material: Polyester
 Color: Black(Customizable)
 Webbing Width: 15mm
 Length: 300mm(Customizable)
 With one 304 Stainless steel buckle
 Tool Max Capacity: 5LBS
 Connected the tool lanyard length should be less than 1200mm
 Conform to ANSI/ISEA 121:2018

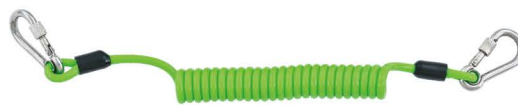


◀ N86008

Material: Nylon
 Color: Green(Customizable)
 With one Zinc Alloy Buckle
 Webbing Width: 20mm
 Stretched Rope Diameter: \varnothing 4mm, Length: 150mm
 Full retracted Length from 300mm to 450mm (Customizable)
 Tool Max Capacity: 2LBS
 Connected the tool lanyard length should be less than 1200mm
 Conform to ANSI/ISEA 121:2018



◀ **N87028**
 Material: Stainless Steel Wirerope + PU
 Hook: Zinc alloy 60mm
 Diameter: 1.0/5.0mm
 Strength: 1lbs
 Natural Length: 530mm
 Max Length: 2200mm



◀ **N87029**
 Material: Stainless Steel Wirerope + PU
 Hook: SS304 6*60mm
 Diameter: 2.0/5.0mm
 Strength: 2lbs
 Natural Length: 480mm
 Max Length: 1220mm



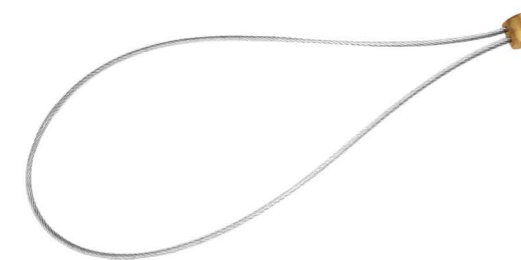
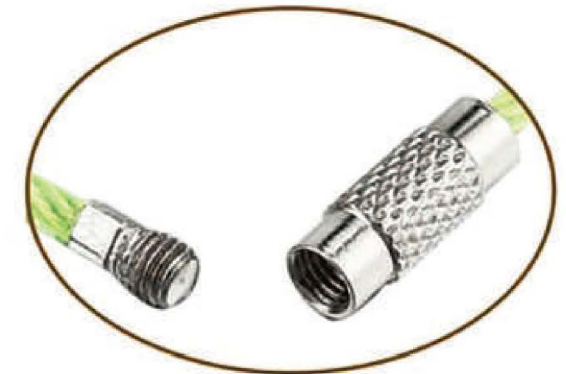
◀ **N87030**
 Material: Stainless Steel Wirerope + PU
 Hook: SS304 6*60mm
 Diameter: 3.0/6.0mm
 Strength: 5lbs
 Natural Length: 480mm
 Max Length: 1500mm



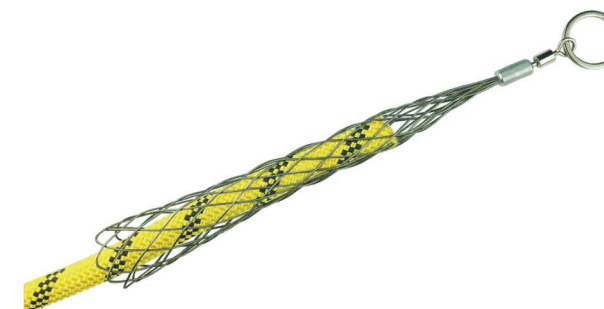
◀ **N87031**
 Material: Stainless Steel Wirerope + PU
 Hook: SS304 6*60mm
 Diameter: 2.0/5.2mm
 Strength: 2lbs
 Natural Length: 480mm
 Max Length: 1220mm



▶ **87501**
 Tools O-ring
 Material: Stainless Steel Wirerope + PU
 Diameter: 1.0/1.5mm
 Strength: 1kg (2.2 lbs)
 Girth Length: 150mm



▶ **87502**
 Tools Ring
 Material: Stainless Steel Wirerope + PU
 Strength: 1kg (2.2 lbs) - 1.0mm
 2kg (4.4 lbs) - 1.25mm
 3kg (6.6 lbs) - 1.5mm



▶ **89001**
 Wire Rope Net Sleeve
 Material: Stainless Steel Wirerope
 Length: 200-500mm
 Diameter: 10mm, 20mm, 30mm



▲ 88105

Material: Stainless Steel
 Wirerope + PU
 PU Diameter: 4.0mm
 Strength: 1.0kg(2.2 lbs)
 Natural Length: 400mm/15.8"
 Max Length: 1650mm/65"
 Stainless Steel Wirerope: 1.0mm



▲ 88106

Material: Stainless Steel
 Wirerope + PU
 PU Diameter: 4.0mm
 Strength: 1.0kg(2.2 lbs)
 Natural Length: 400mm/15.8"
 Max Length: 1650mm/65"
 Stainless Steel Wirerope: 1.0mm



▲ 88111

Material: Polyester
 Width: 15mm
 Strength: 1kg(2.2 lbs)
 Retracted length: 350mm/13.8"
 Extended length: 20"



▲ 88112

Material: Polyester
 Width: 15mm
 Strength: 1kg(2.2 lbs)
 Retracted length: 350mm/13.8"
 Extended length: 20"



▲ 88107

Material: Polyester
 Width: 15mm
 Strength: 1kg(2.2 lbs)
 length: 350mm/13.8"
 Extended length: 20"



▲ 88110

Material: Polyester
 Width: 15mm
 Strength: 1kg(2.2 lbs)
 length: 350mm/13.8"
 Extended length: 20"



▲ 88114

Material: Polyester
 Width: 15mm
 Strength: 1kg(2.2 lbs)
 Retracted length: 350mm/13.8"
 Extended length: 20"



▲ 88115

Material: Polyester
 Width: 15mm
 Strength: 1kg(2.2 lbs)
 Retracted length: 350mm/13.8"
 Extended length: 20" 450mm/17.5"
 Max Length: 1700mm/67"